



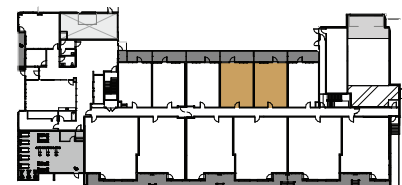
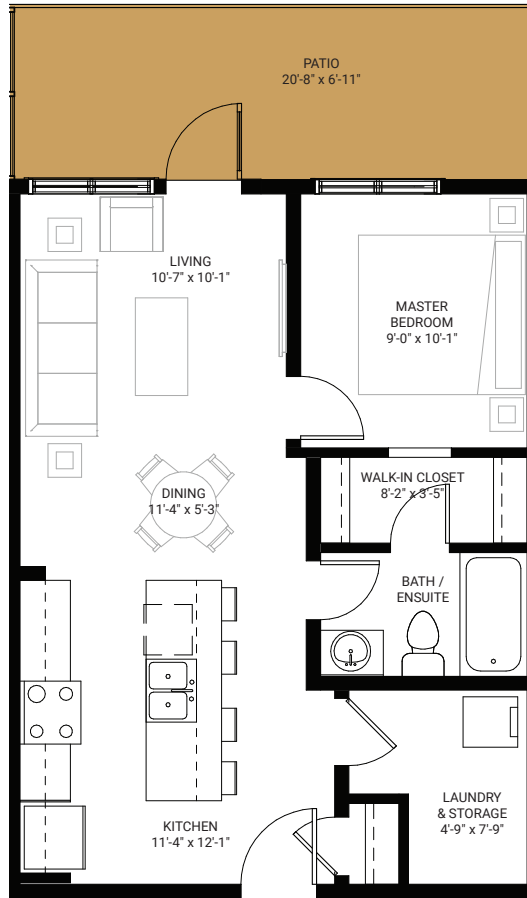
hudson
MARDALOOP

SUITE A1

1 bed, 1 bath

600 SQ.FT

+ 142 SF of balcony living area.





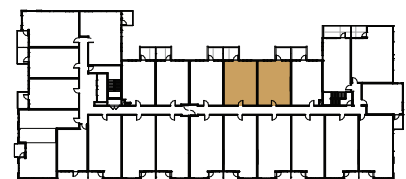
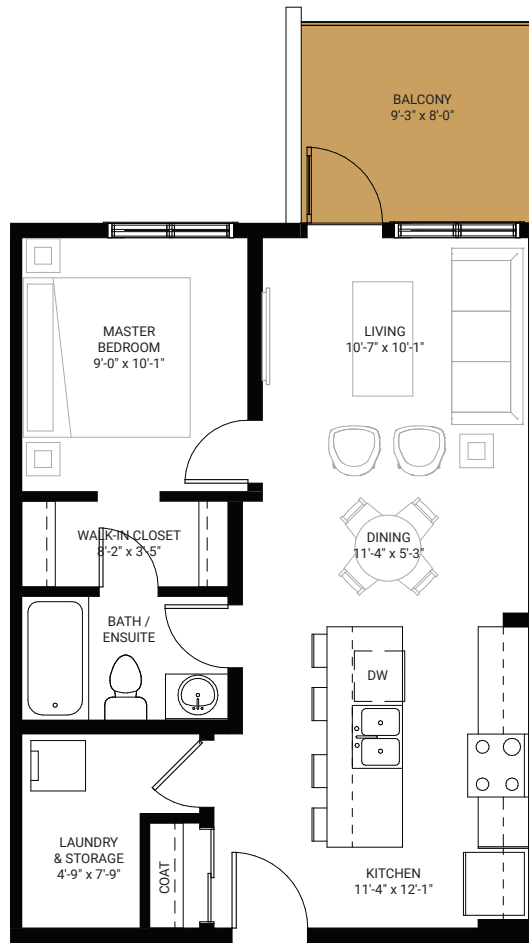
hudson
MARDALOOP

SUITE A1
Level 2-6

1 bed, 1 bath

600 SQ.FT

+ 74 SF of balcony living area.





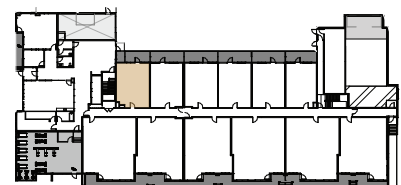
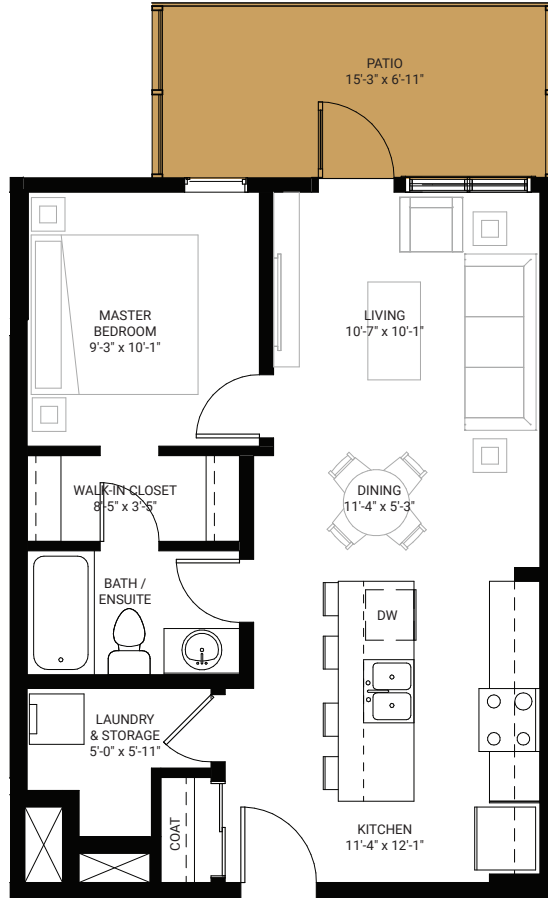
hudson
MARDALOOP

SUITE A2

1 bed, 1 bath

596 SQ.FT

+ 104 SF of balcony living area.





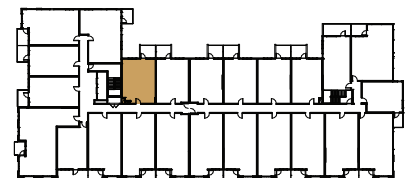
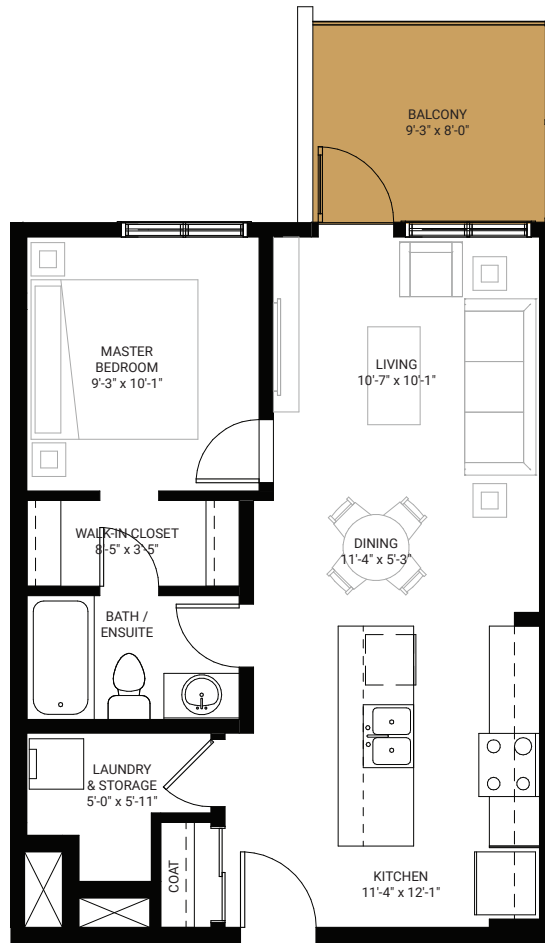
hudson
MARDALOOP

SUITE A2
Level 2-6

1 bed, 1 bath

596 SQ.FT

+ 74 SF of balcony living area.





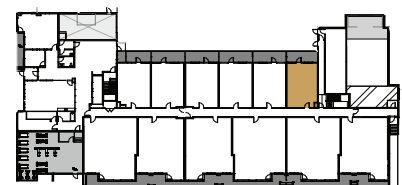
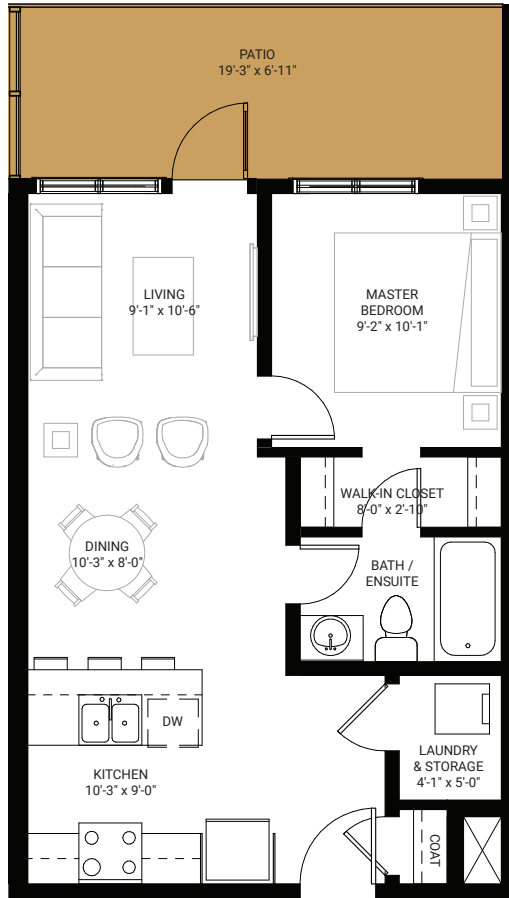
hudson
MARDALOOP

SUITE A3

1 bed, 1 bath

547 SQ.FT

+ 142 SF of balcony living area.





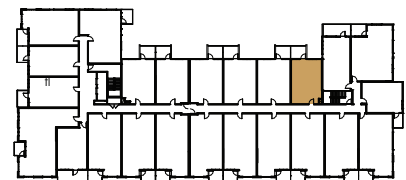
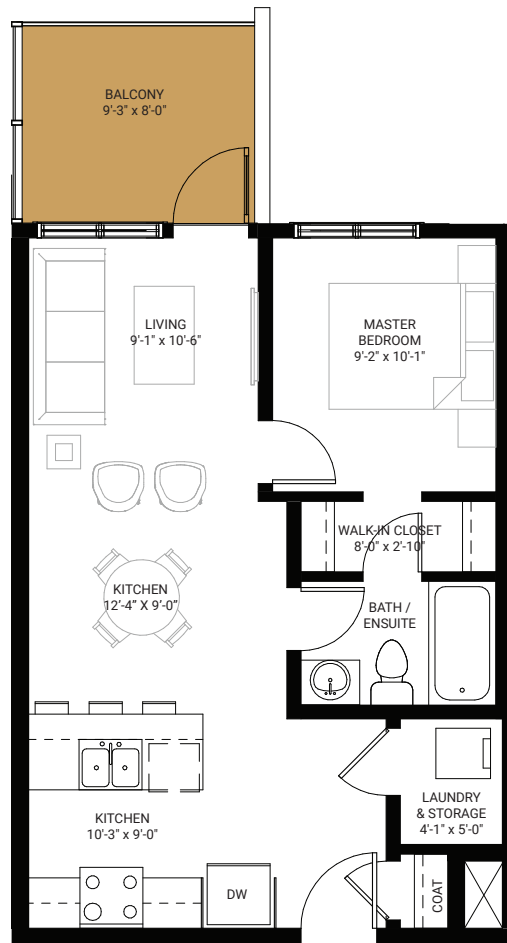
hudson
MARDALOOP

SUITE A3
Level 2-6

1 bed, 1 bath

547 SQ.FT

+ 74 SF of balcony living area.





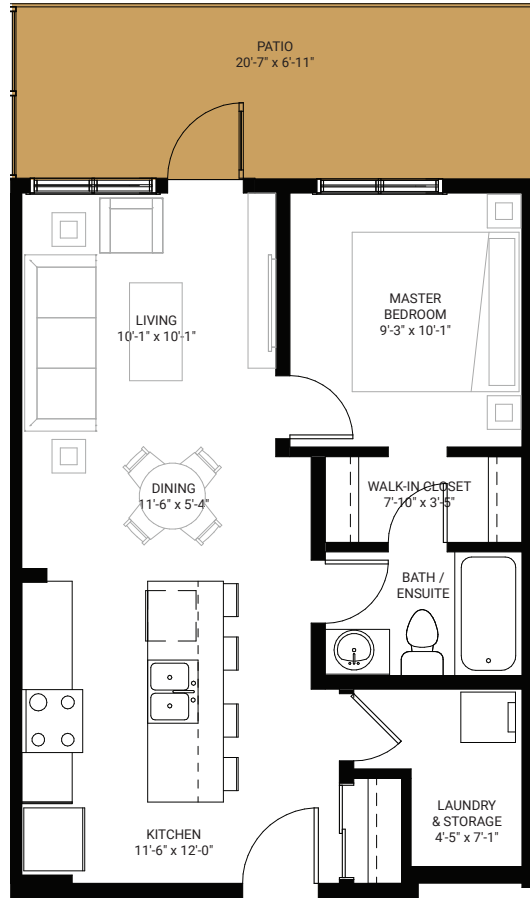
hudson
MARDALOOP

SUITE A4

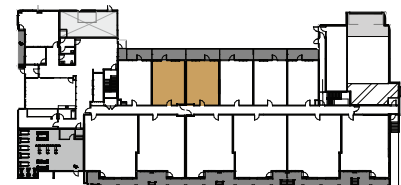
1 bed, 1 bath

594 SQ.FT

+ 142 SF of balcony living area.



MAIN
LEVEL





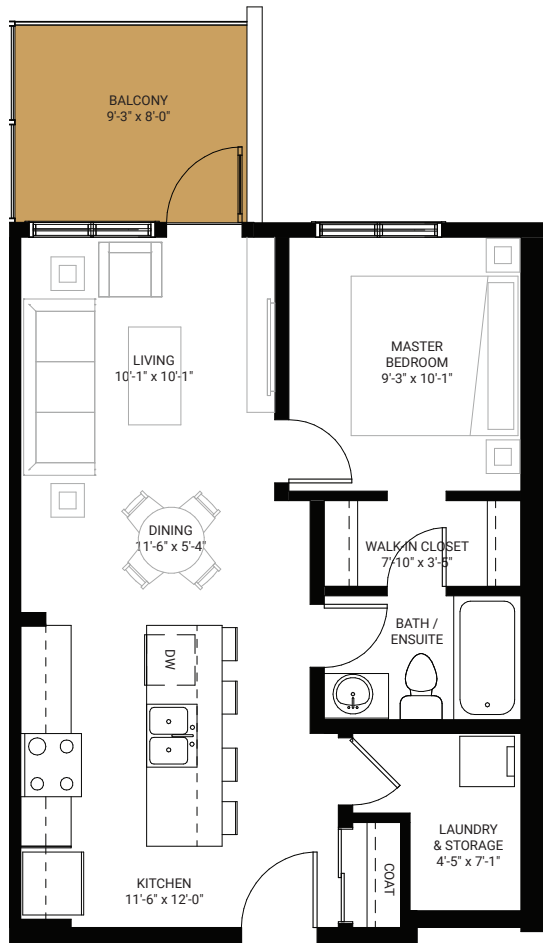
hudson
MARDALOOP

SUITE A4
Level 2-6

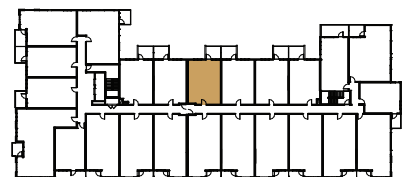
1 bed, 1 bath

594 SQ.FT

+ 74 SF of balcony living area.



LEVEL
2-6





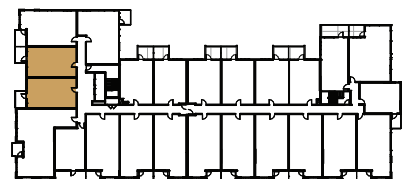
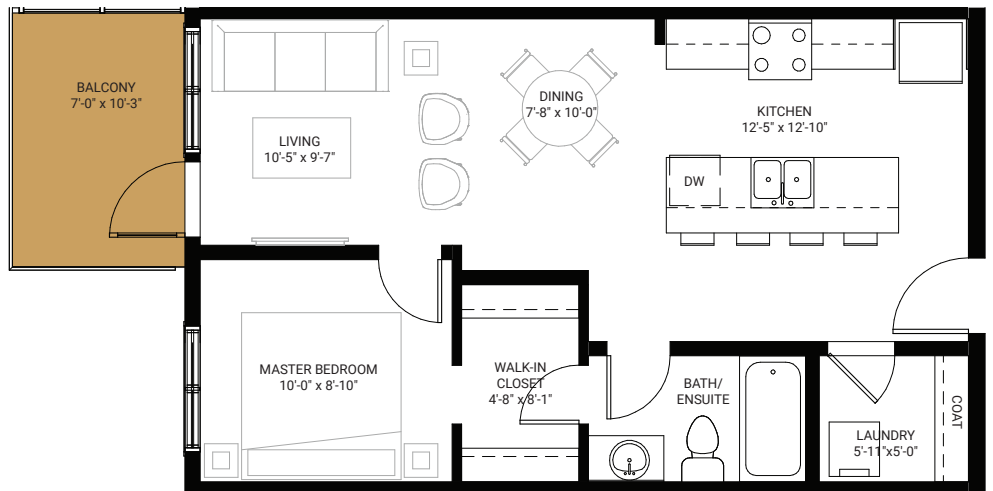
hudson
MARDALOOP

SUITE A5

1 bed, 1 bath

608 SQ.FT

+ 71 SF of balcony living area.





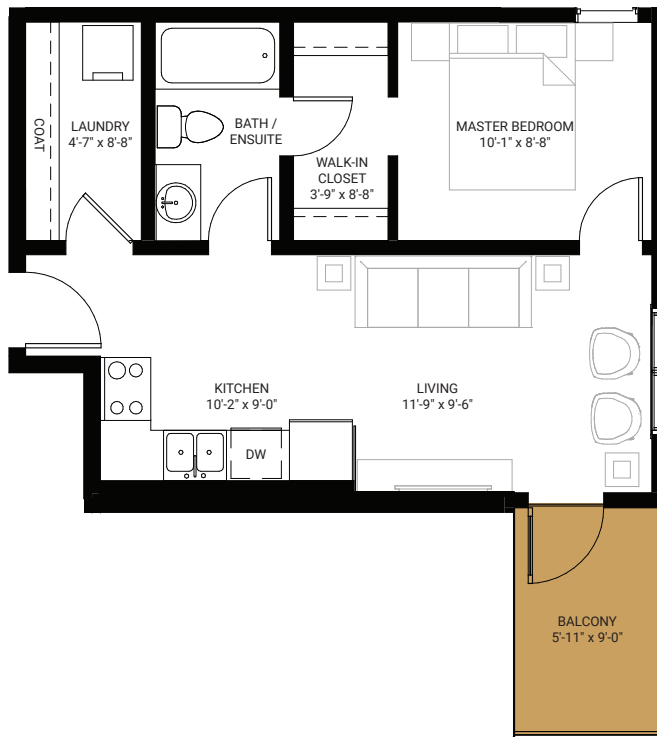
hudson
MARDALOOP

SUITE A6

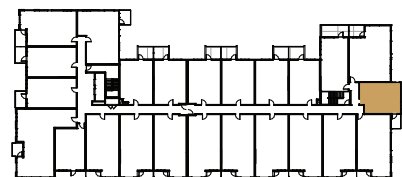
1 bed, 1 bath

492 SQ.FT

+ 54 SF of balcony living area.



MAIN
LEVEL





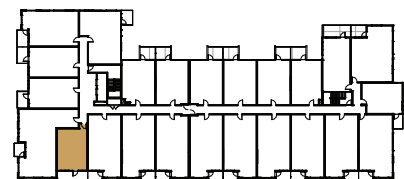
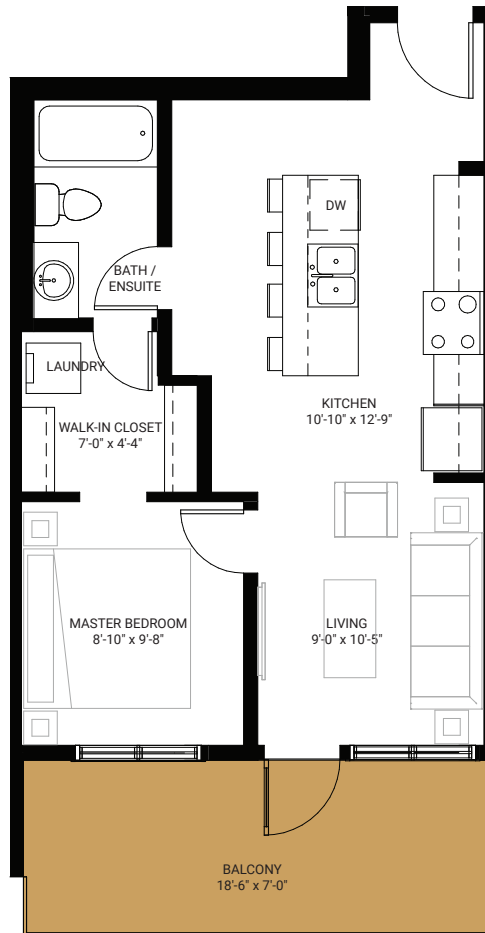
hudson
MARDALOOP

SUITE A7

1 bed, 1 bath

530 SQ.FT

+ 129 SF of balcony living area.





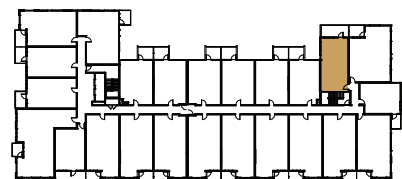
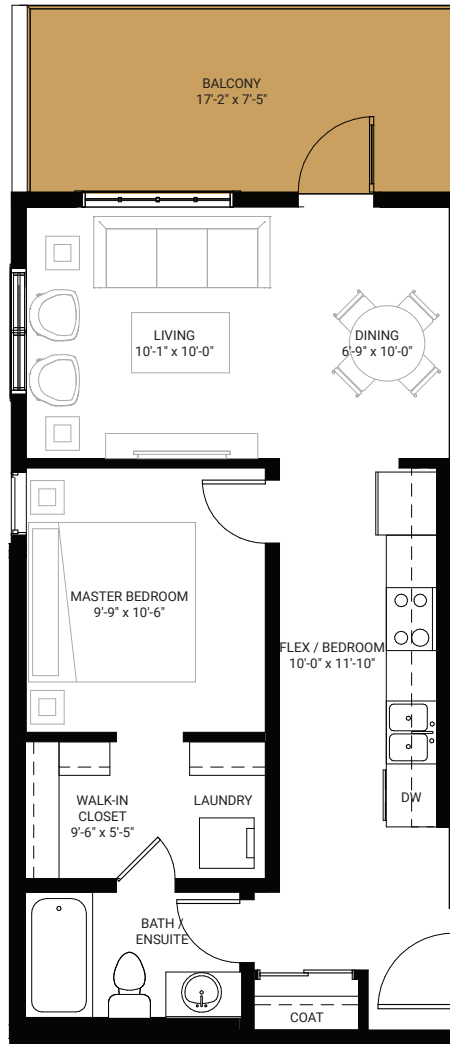
hudson
MARDALOOP

SUITE A8

1 bed, 1 bath

593 SQ.FT

+ 127 SF of balcony living area.





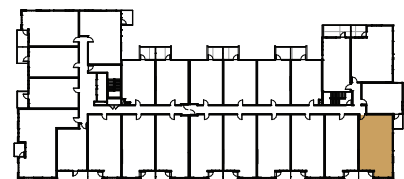
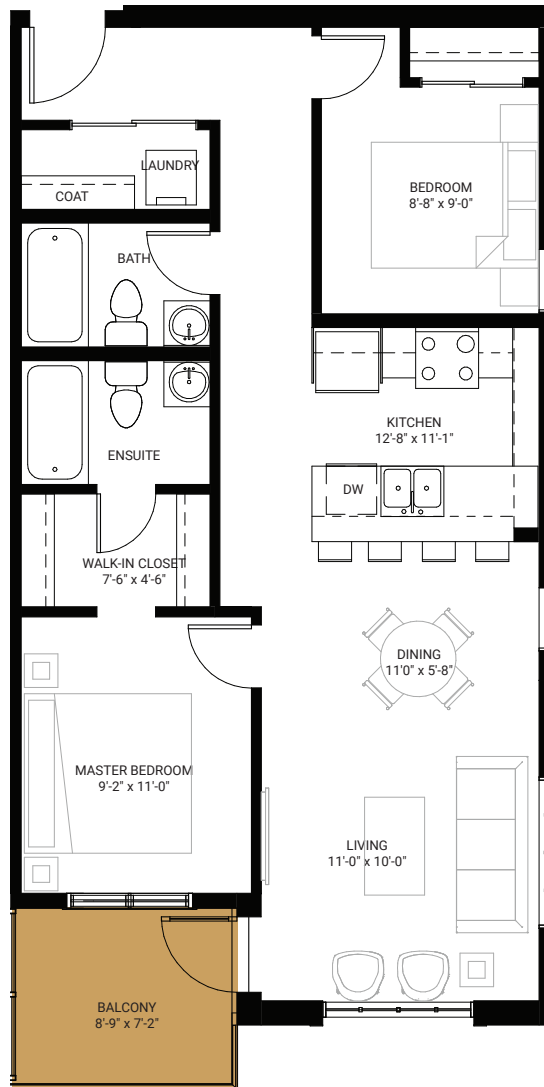
hudson
M ARDA LOOP

SUITE B1

2 bed, 2 bath

814 SQ.FT

+ 62 SF of balcony living area.





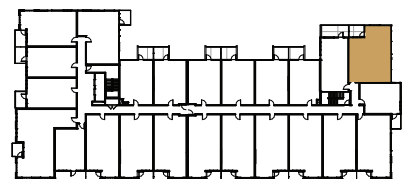
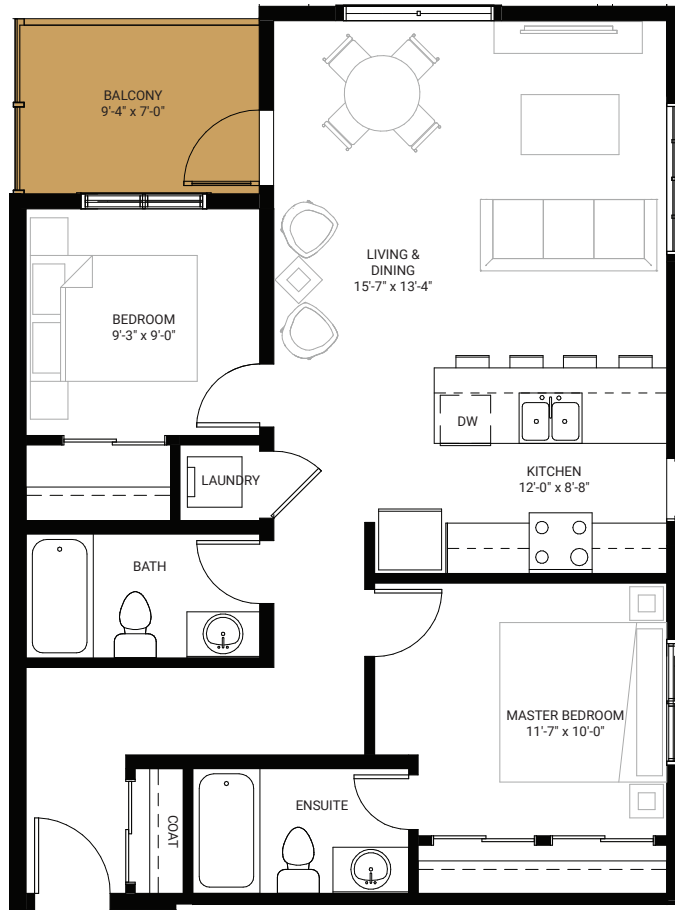
hudson
MARDALOOP

SUITE B2

2 bed, 2 bath

869 SQ.FT

+ 65 SF of balcony living area.





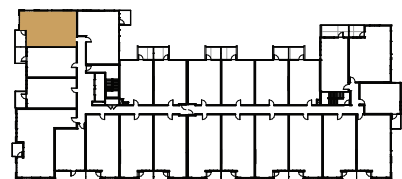
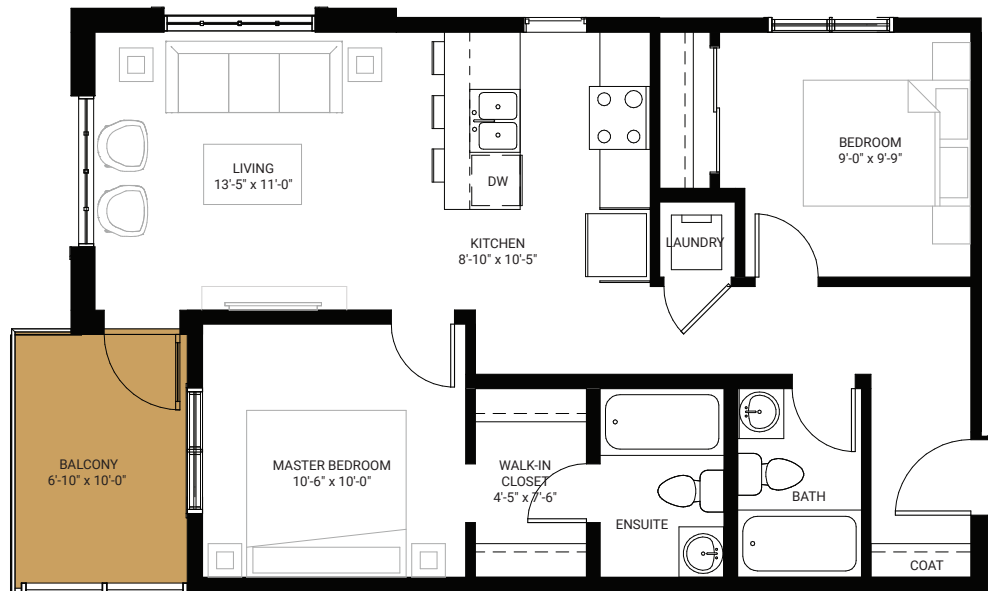
hudson
MARDALOOP

SUITE B3

2 bed, 2 bath

763 SQ.FT

+ 68 SF of balcony living area.





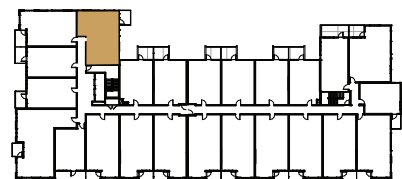
hudson
MARDALOOP

SUITE B4

2 bed, 2 bath

799 SQ.FT

+ 63 SF of balcony living area.





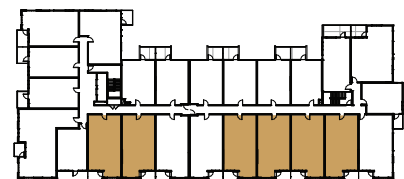
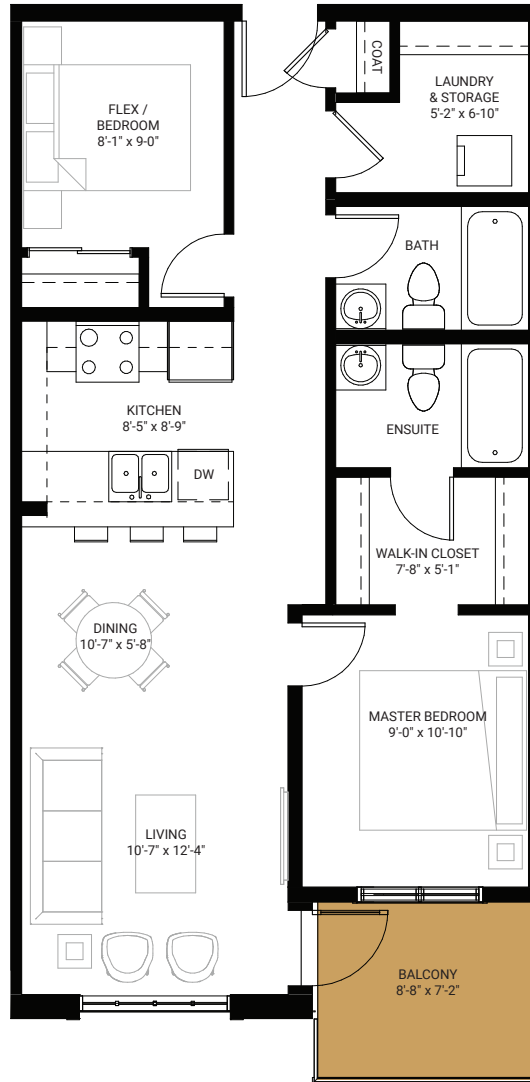
hudson
MARDA LOOP

SUITE C1

1 bed + flex, 2 bath

794 SQ.FT

+ 63 SF of balcony living area.





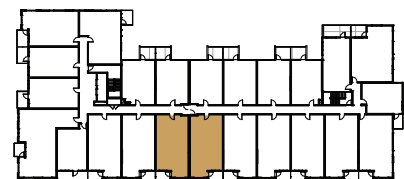
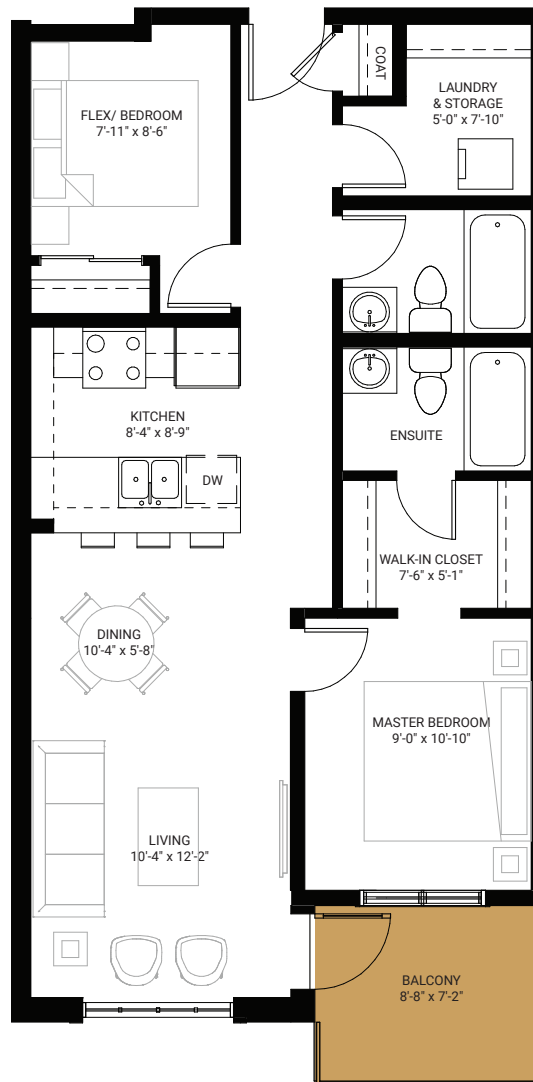
hudson
MARDA LOOP

SUITE C2

1 bed + flex, 2 bath

725 SQ.FT

+ 63 SF of balcony living area.





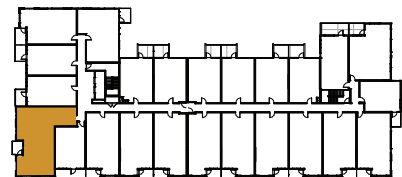
hudson
MARDALOOP

SUITE D

3 bed, 2 bath

1156 SQ.FT

+ 56 SF of balcony living area.





hudson

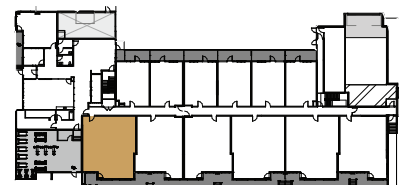
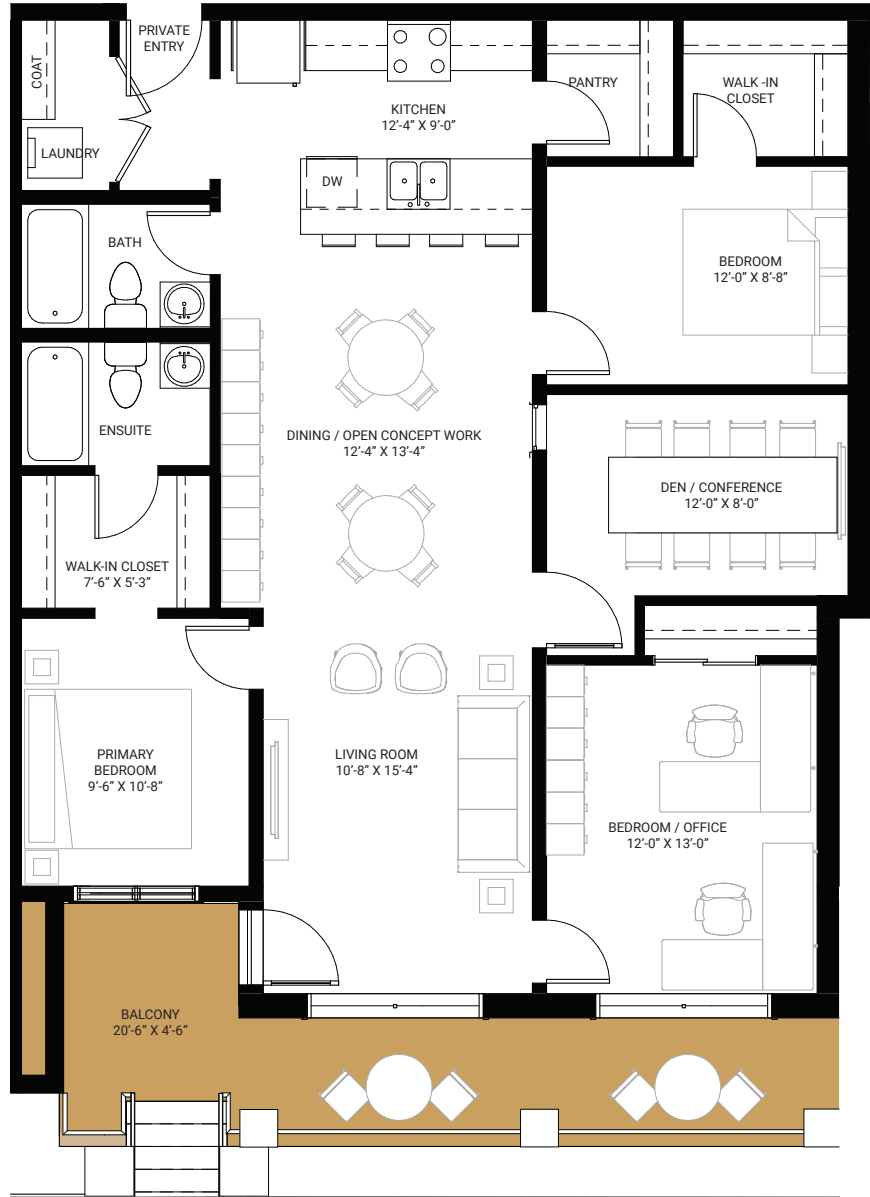
MARDA LOOP

SUITE LW1

3 bed + flex, 2 bath

1283 SQ.FT

With walk-up "LIVE/WORK" option -
+ 183 SF of balcony living area.





hudson

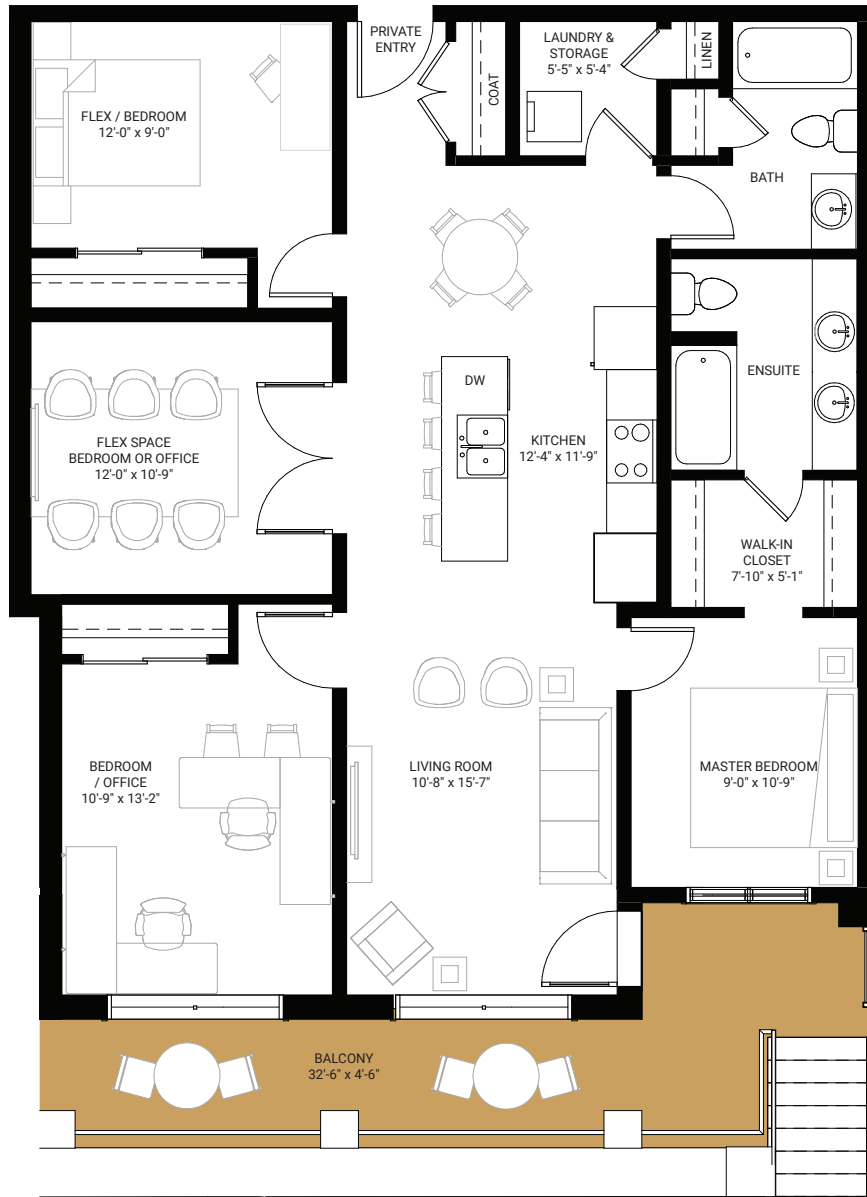
MARDA LOOP

SUITE LW1A

2 bed + flex, 2.5 bath

1283 SQ.FT

With walk-up "LIVE/WORK" option -
+ 190 SF of balcony living area.





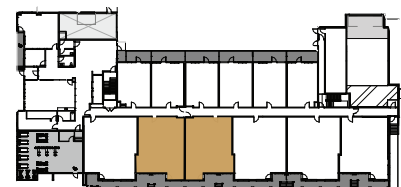
hudson
MARDALOOP

SUITE LW2

2 bed + flex, 2.5 bath

1107 SQ.FT

With walk-up "LIVE/WORK" option -
+ 226 SF of balcony living area.





hudson

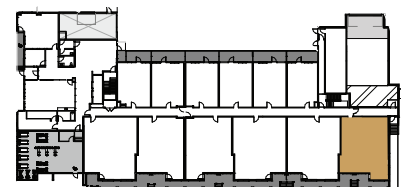
MARDA LOOP

SUITE LW3

3 bed + flex, 2 bath

1136 SQ.FT

With walk-up "LIVE/WORK" option -
+ 218 SF of balcony living area.





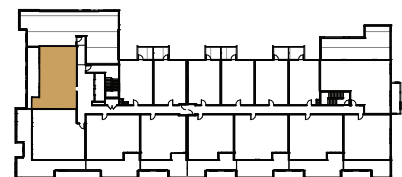
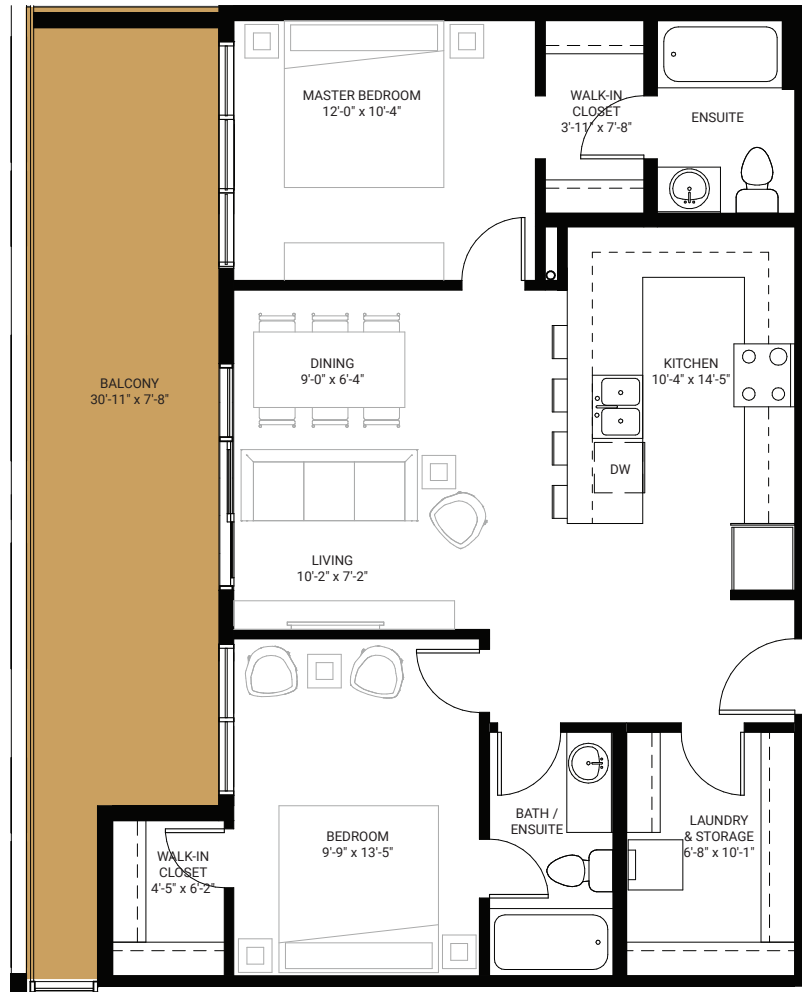
hudson
MARDALOOP

PENTHOUSE
UNIT 1

2 bed, 2 bath

942 SQ.FT

+ 225 SF of balcony living area.





hudson
MARDALOOP

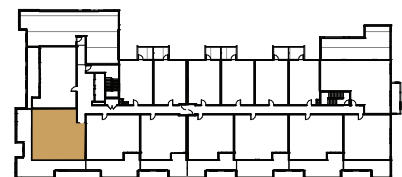


**PENTHOUSE
UNIT 2**

2 bed, 2 bath

1023 SQ.FT

+ 592 SF of balcony living area.



hudsonmardaloop.ca

Dimensions, sizes, specifications, layouts and materials are approximate only and subject to change without notice. E.&O.E



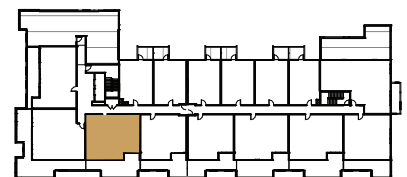
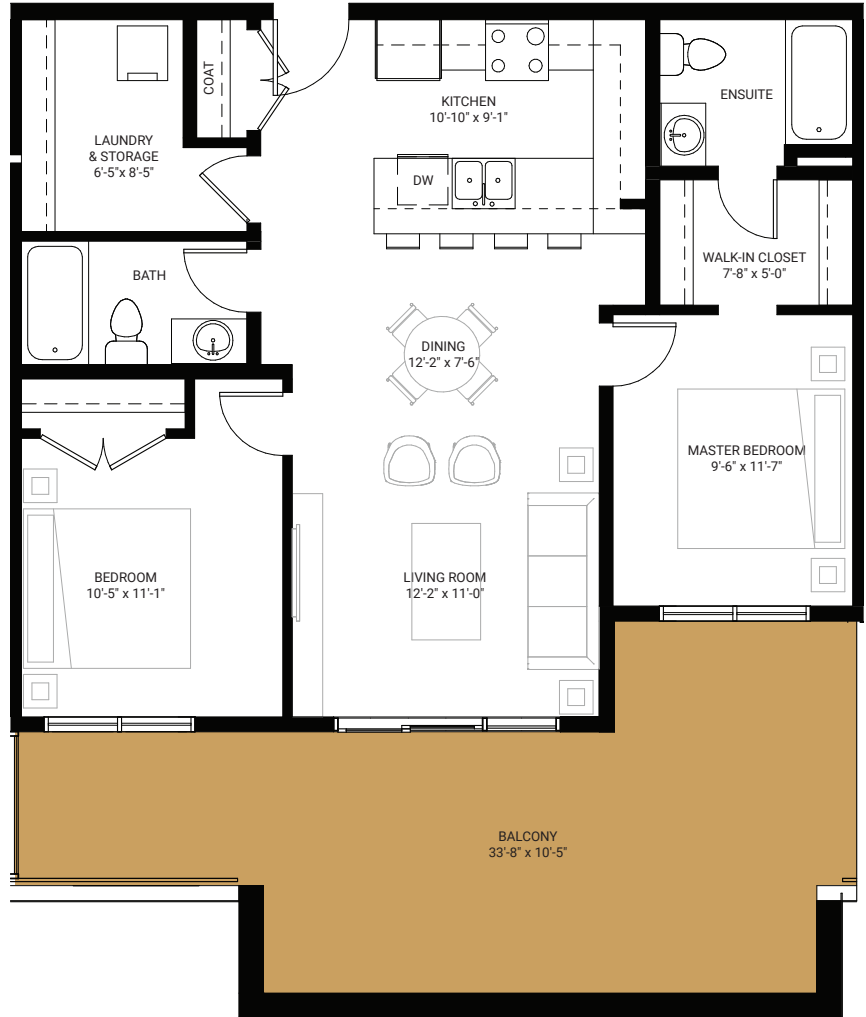
hudson
MARDALOOP

PENTHOUSE
UNIT 3

2 bed, 2 bath

930 SQ.FT

+ 341 SF of balcony living area.





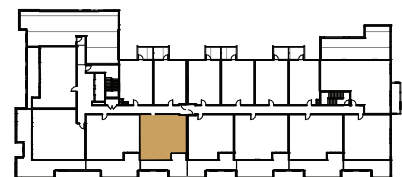
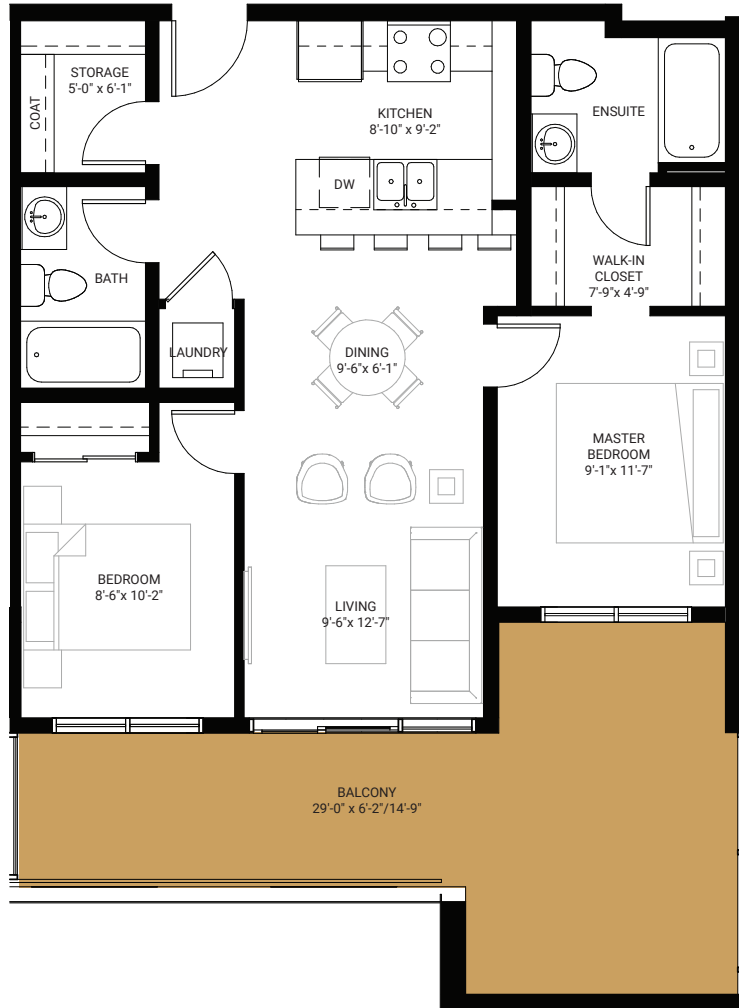
hudson
MARDALOOP

**PENTHOUSE
UNIT 4**

2 bed, 2 bath

791 SQ.FT

+ 263 SF of balcony living area.





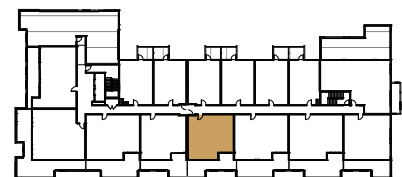
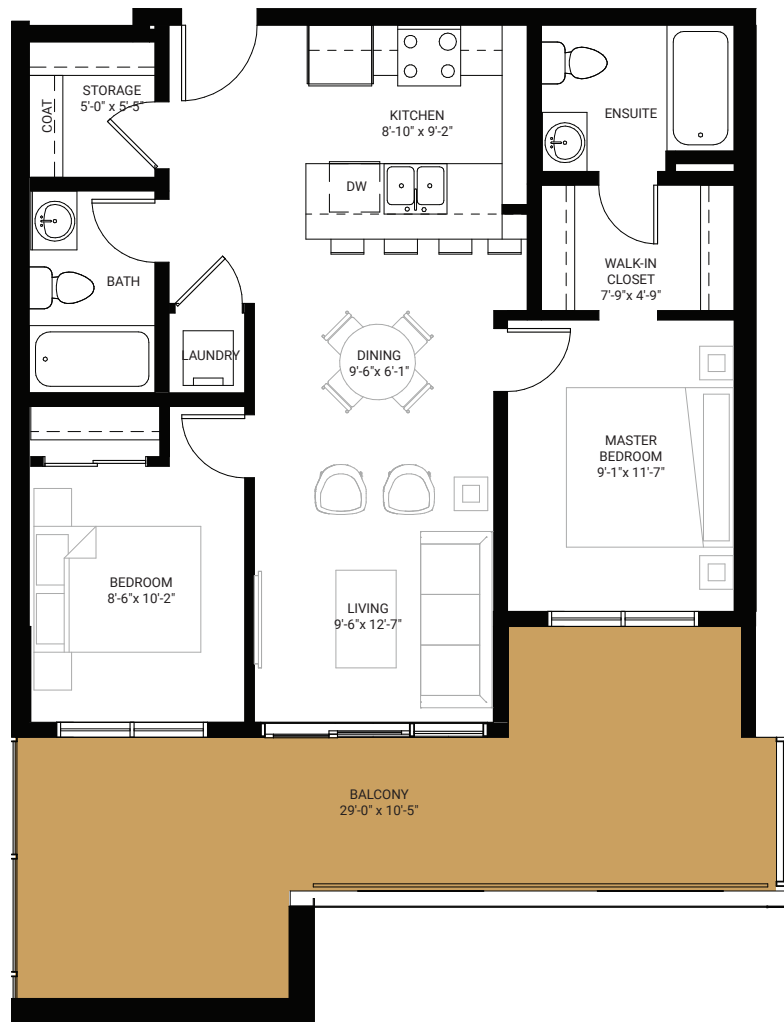
hudson
MARDALOOP

PENTHOUSE
UNIT 5

2 bed, 2 bath

791 SQ.FT

+ 263 SF of balcony living area.





hudson

MARDA LOOP

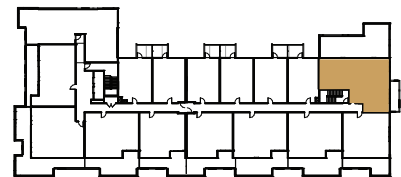


**PENTHOUSE
UNIT 6**

2 bed, 2.5 bath

1189 SQ.FT

+ 646 SF of balcony living area.





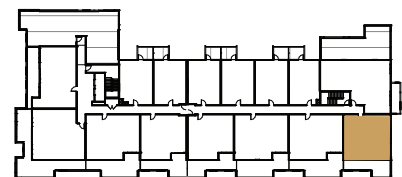
hudson
MARDA LOOP

PENTHOUSE
UNIT 7

2 bed, 2 bath

888 SQ.FT

+ 199 SF of balcony living area.



HUDSON

- Built by Calgary's Premier Property Developer, Sarina Homes
- Building Entrance Mural by Local Artist
- Wood-framed construction building with two high speed elevators
- Energy efficient building design including mechanical and distribution systems
- Maintenance free exteriors featuring private balconies, patios and professionally designed Courtyard
- Comprehensive coverage including deposit payments are protected by Travelers' New Home Warranty Program
- Peace of mind provided through Travelers' comprehensive warranty program:
 - 1 Year Workmanship & Materials
 - 2 Year Delivery & Distribution Systems
 - 5 Year Building Envelope Coverage
 - 10 Year Structural Warranty
- Built-in smoke/heat detectors and in-suite water sprinkler system
- Painted, secured, and heated underground parkade
- Entry phone and security monitoring system at lobby
- Storage Lockers Available

AMENITIES

- Vibrant fully furnished social lounge
- Private ground level Courtyard featuring movie theater, outdoor games, dog run area
- Fitness Studio
- Bike Storage & Repair Area
- Pet wash station
- Furnished rooftop patio for entertaining and lounging

* Details and specifications subject to change as per builder

INTERIOR DETAILS

- Matte black hardware and fixtures throughout
- 9' ceilings (except where mechanical drops are required)
- Air-conditioned suites
- Individual thermostats for temperature control
- In-suite washer and dryer with quick water shut off valve
- Custom made LED energy efficient contemporary light fixtures throughout
- Roller shade window coverings throughout
- Contemporary 4 inch painted baseboards, door frames with 3 inch casings
- Ample closet and modern wire storage and closet organizers included
- Durable Wide Plank Luxury Vinyl Plank Flooring throughout

GOURMET KITCHENS

- Stainless Steel Appliances including dishwasher, microwave, flat top electric range with convection oven and integrated fridge with french door fridge with drawer freezer and water/ice dispenser
- Flat Panel Cabinetry with Wood Accents & Black Pulls
- Ceramic tile with custom full height kitchen backsplashes
- Polished Stone Quartz Countertops
- Stainless steel undermount sink

BATHROOMS

- Polished Stone Quartz Countertops with 8 inch splash return
- Vanity design with maximum storage in mind
- Porcelain top mount sink
- Matching black bathroom hardware and accessories
- Environmentally conscious fixtures, shower heads, and toilets
- 12 x 24 porcelain wall tiles where applicable
- Ensuites with 8mm glass shower and matching black hardware with tub base and tile surround for second baths or un-attached baths